



Quick Start Guide

Follow these simple steps to access your PC's files from anywhere on the Internet, using just a web browser.

Download & Install

- Download the MyPCDrive software from our website (<http://www.mypcdrive.com/go/download>) and run the package.
- The installation program will launch automatically to guide you through the installation process.
- Follow the on-screen instructions to complete the installation.
- After installation you will be prompted to activate the software.

Note: MyPCDrive operates on port number 8200. Please ensure that this port is allowed through any firewalls and ensure that your router's port forwarding settings are configured to allow forwarding of this port.

Activation

You will be required to activate the MyPCDrive software to begin using it. The activation process will allow you to choose a unique remote hostname used to access your computer's shared files.

New Installation

- Choose '**New Installation**' & click Next, if you wish to install a fresh copy of MyPCDrive.
- Enter your contact information and choose a hostname to uniquely identify your computer.
- Click Activate.

The screenshot shows a window titled 'MyPCDrive Account Activation'. The window has a blue header with the MyPCDrive logo and a toolbar with icons for folder, speaker, camera, monitor, and CD/DVD. The main content area is titled 'Account Activation' and contains a section for 'Account Information' with the following fields: 'First Name:' and 'Last Name:' (two text boxes), 'Valid Email Address:' (one text box), and 'Internet Name' section with 'Hostname:' (one text box) and a dropdown menu currently showing 'mypcdrive.com'. Below these fields is an empty text box. At the bottom of the window are three buttons: '< Back', 'Close', and 'Activate >'. The window title bar includes a question mark icon and a close button.

- Next, create a user account that will be used to login to your account.



Add New User

MyPCDrive™

Add New User

Create a new user that will have access to your PC:

User Information

E-Mail Address: milan@canweb.com

Password:

Full Name: Milan|Zdimal

Send user an e-mail containing account information

Close Next >

- Choose the folders that you wish to share. If the folder(s) that you wish to share are not listed click 'Next'. You will be able to share any folder on your computer using the MyPCDrive administrator interface.



Add Shared Folders

MyPCDrive™

Add Shared Folders

Select folders to share:

Shared Folders

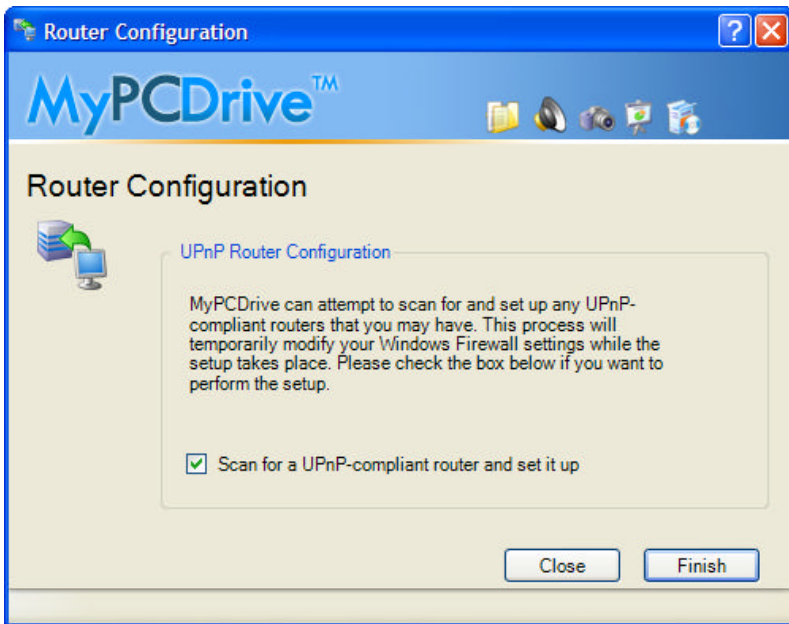
My Documents

My Pictures

My Music

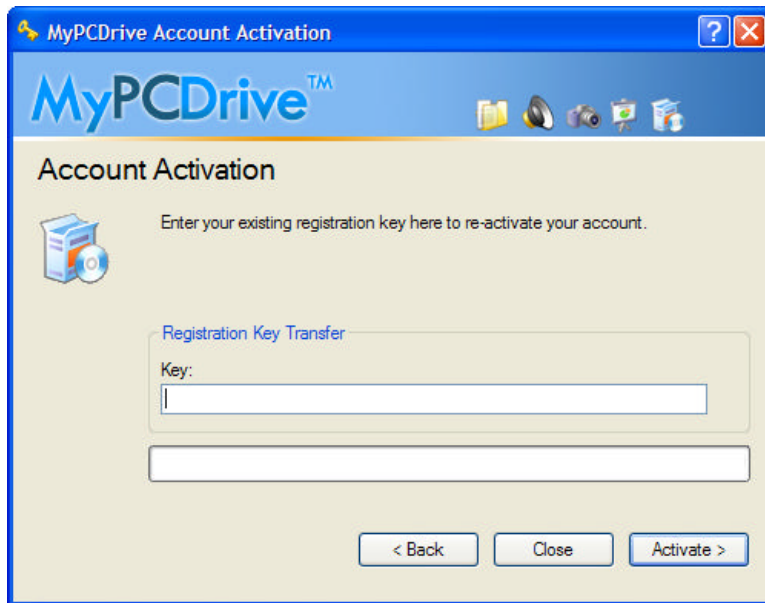
Close Next >

- If you have a UPnP (Universal Plug & Play) device such as a router, MyPCDrive will attempt to configure it for you. **Note: If the Router Configuration wizard does not detect your router or fails to configure it, you will need to enable port forwarding on the router. Forwarding should be set to forward port 8200 to the internal address of the computer running MyPCDrive.**



Existing Users

- Choose '**Reactivate**', if you are an existing user and wish to reactivate an existing account.
- All your account information will be retrieved.



MyPCDrive Account Activation

MyPCDrive™

Account Activation

Enter your existing registration key here to re-activate your account.

Registration Key Transfer

Key:

< Back Close Activate >

Preview Your Shared Folders

- Go to <http://www.mypcdrive.com>
- Login using the email address, password and remote hostname that you selected and click Login.